

# VACCINATION: WHAT YOU NEED TO KNOW

## WHO SHOULD TAKE THE COVID-19 VACCINE

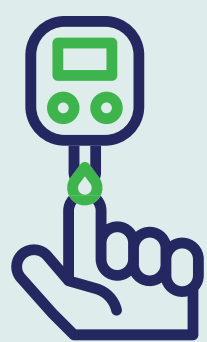


- Those 18 and above can be vaccinated
- Those with co-morbidities are at high risk of suffering from severe COVID-19 disease if infected
- Thus, those with co-morbidities should be vaccinated to protect themselves from suffering the effects of severe infection

\* Co-morbid is defined as a person who is suffering from two or more unrelated diseases/medical conditions simultaneously

## HIGH RISK GROUPS ELIGIBLE FOR VACCINATION

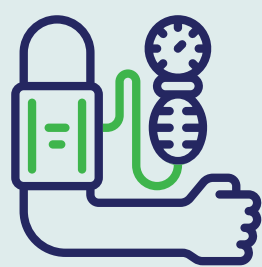
Those suffering from the conditions listed below are considered high-risk and will therefore be **PRIORITISED** for vaccination accordingly



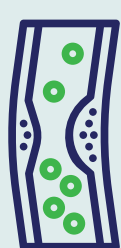
Diabetes: Type 1 or 2



Obesity:  
BMI >40 with  
obesity-related diseases



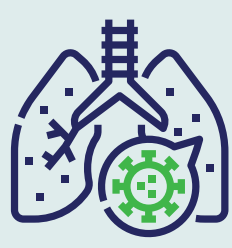
Hypertension/  
High blood  
pressure



Hyper-  
cholesterolaemia



Heart disease including  
congenital heart disease,  
atrial fibrillation, coronary  
artery disease and  
heart failure



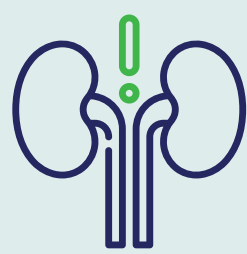
Lung disease:  
Asthma, Chronic  
Obstructive  
Pulmonary  
Disease (COPD)



Cancer  
(treatment completed  
and disease stable)



Pregnancy with  
co-morbidities:  
Between 14-33 weeks

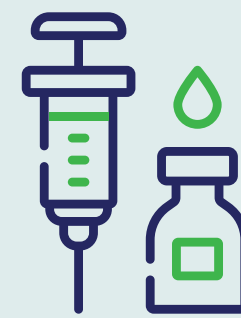


Chronic kidney  
disease:  
Stages 3-5,  
undergoing dialysis

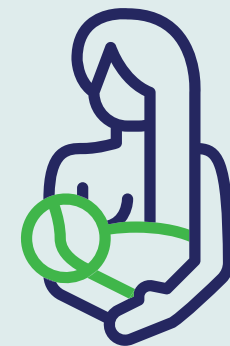
## VACCINATION IS ALSO SAFE AND RECOMMENDED...



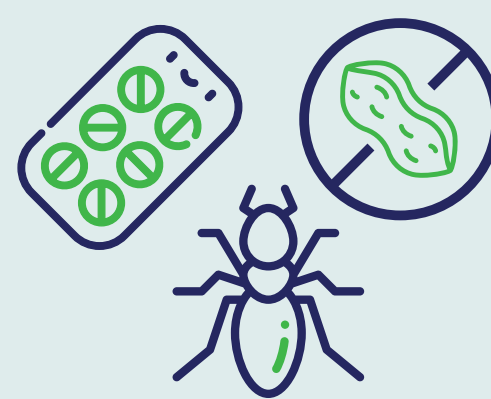
After acute illness:  
Fever (2 weeks after  
recovery)



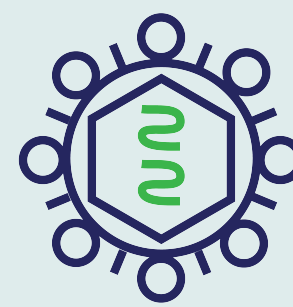
After receiving other  
vaccines (2 weeks after  
receiving vaccine)



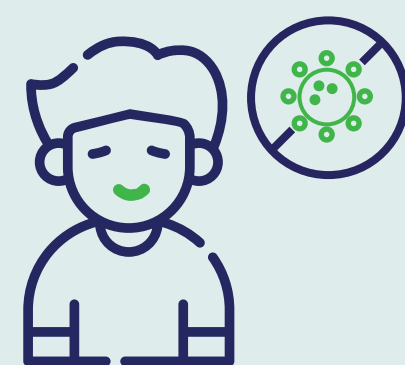
For  
lactating  
mothers



For mild allergies  
sufferers:  
Food, medicine, insect  
bites (rashes,  
itchiness, swelling)



For HIV patients:  
Stable condition



Was infected with  
COVID-19  
(3-6 months after  
recovery)

## CONTRAINDICATION\* TO VACCINATION

There are a few conditions that  
**CONTRAINDICATE VACCINATION**, which are:

- ✗ **SEVERE ALLERGIES, ANAPHYLAXIS**, after receiving the first dose of COVID-19 vaccine (not to take the second dose)
- ✗ **SEVERE ALLERGIES, ANAPHYLAXIS** to other vaccines, medications or other substances

Consult your doctor...

- if you have **ALLERGIES** and are **UNSURE** about the severity
- to **DISCUSS YOUR VACCINATION SCHEDULE** if you belong to one of the high-risk groups below:
  - a) **BLOOD DISORDERS** including those receiving medication such as blood thinners
  - b) **WEAKENED IMMUNE SYSTEM** due to diseases or medications:
    - Cancer patients currently undergoing treatment
    - Autoimmune diseases: SLE and rheumatoid arthritis on specialised medication
  - c) Receiving long-term **STERIODS**

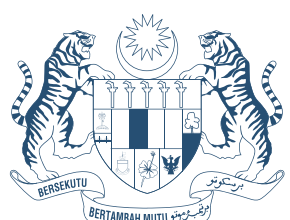
\* A contraindication is defined as a symptom or condition that renders a certain treatment risky to a patient



**FOR MORE  
INFORMATION,  
SCAN QR CODE.**

[vaksincovid.gov.my](https://vaksincovid.gov.my)

**LINDUNG DIRI,  
LINDUNG SEMUA.**



**SPECIAL COMMITTEE ON ENSURING ACCESS  
TO COVID-19 VACCINE SUPPLY (JKJAV)**